



CAVILL MALL

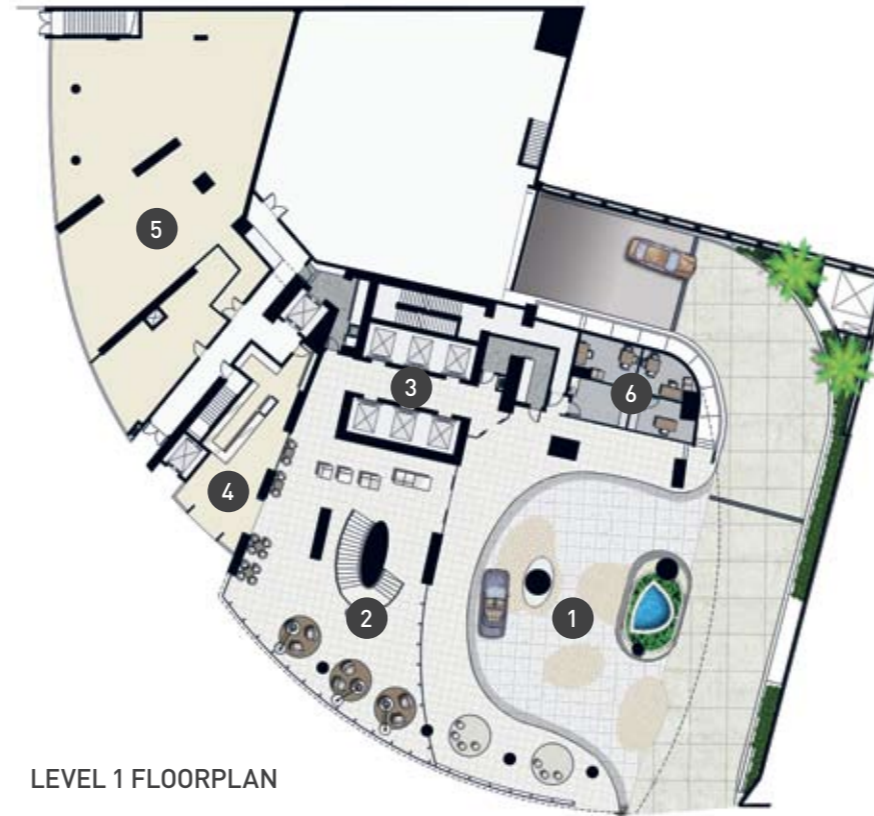
THE ESPLANADE

LEVEL 3 FLOORPLAN

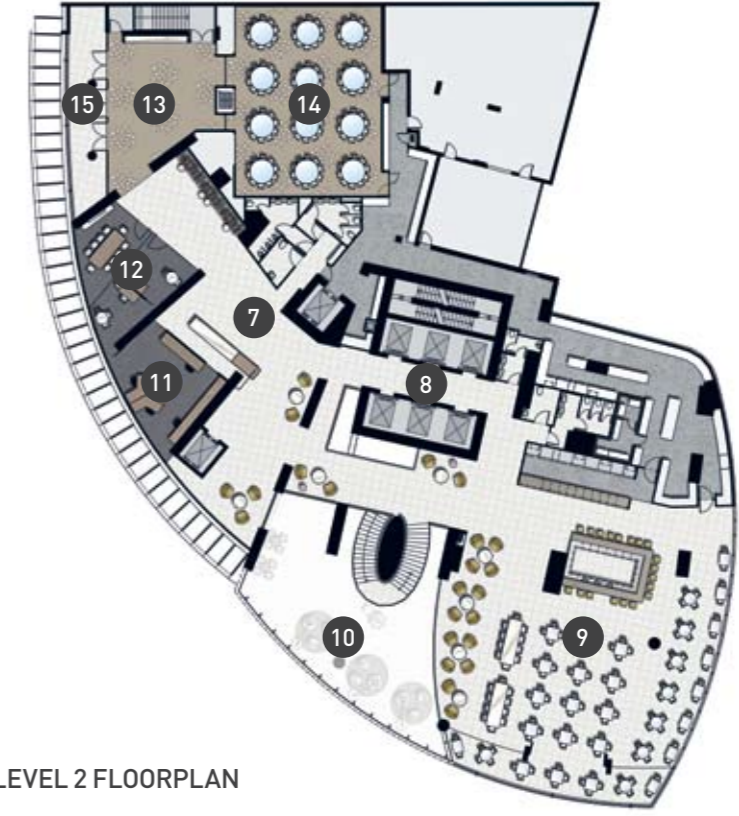
- 1. LANDSCAPED RETAIL TERRACE
- 2. RESIDENTS & GUESTS' OUTDOOR RECREATION TERRACE
- 3. RESIDENTIAL TOWER. RESIDENTS' INDOOR RECREATION FACILITIES
- 4. RESIDENTS & GUESTS' POOL TERRACE



RETAIL PRECINCT & RESORT STYLE FACILITIES



LEVEL 1 FLOORPLAN



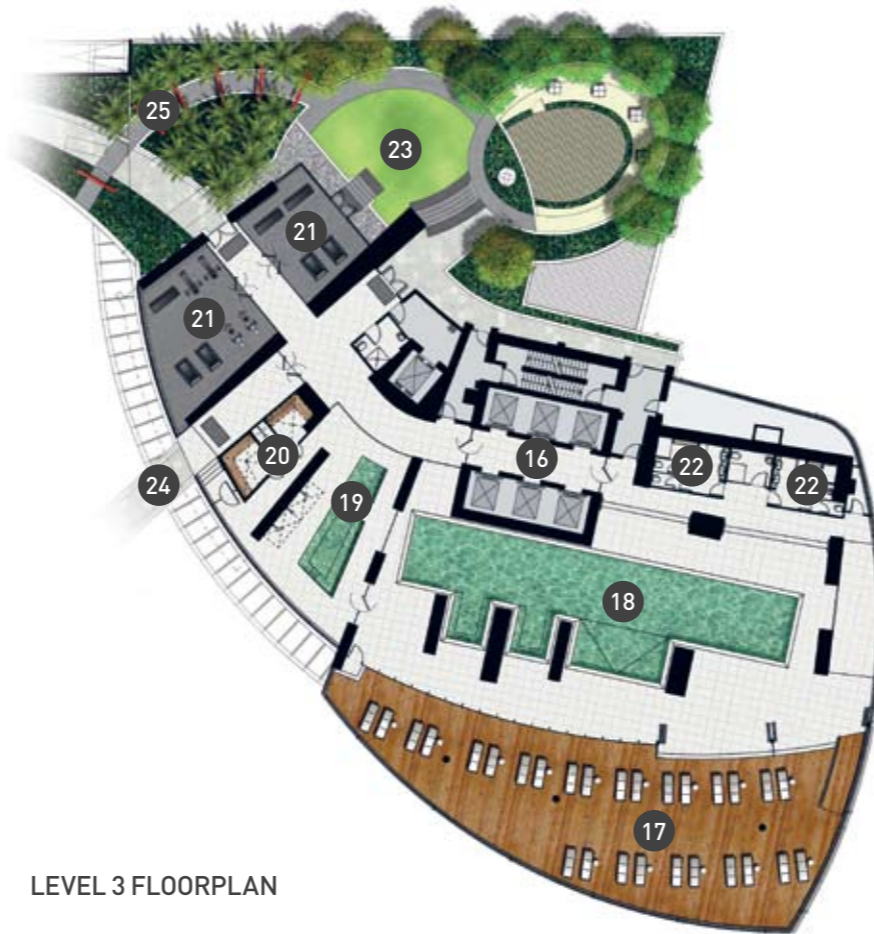
LEVEL 2 FLOORPLAN

RETAIL PRECINCT

APPROXIMATELY 40 BOUTIQUES, SHOPS, RESTAURANTS AND CAFES WILL BE LOCATED ON THE LOWER LEVELS OF THE PRECINCT. FEATURING EXPANSIVE GLASS WINDOWS AND FLEXIBLE STORE DESIGNS, THE RETAIL COMPLEX ENJOYS SOME OF THE MOST BREATHTAKING COASTAL VIEWS IN THE WORLD, DELIVERING A SHOPPING EXPERIENCE UNLIKE ANY OTHER.

RECREATIONAL FACILITIES

RESORT-QUALITY RECREATIONAL FACILITIES ARE LOCATED IN THE UPPER LEVELS OF THE PRECINCT, AVAILABLE EXCLUSIVELY TO SOUL RESIDENTS & GUESTS. FACILITIES INCLUDE A SPARKLING OUTDOOR POOL AND SPA OVERLOOKING SURFERS PARADISE BEACH, A LANDSCAPED GARDEN AND BARBEQUE AREA FOR ENTERTAINING, AND AN INDOOR LAP POOL, GYM, SPA AND STEAM ROOM, WHICH ARE LOCATED ON LEVEL 3 OF THE RESIDENTIAL TOWER.



LEVEL 3 FLOORPLAN

LEVEL 1	LEVEL 2	LEVEL 3
1. PORTE COCHERE	7. RECEPTION	16. LIFT LOBBY
2. FOYER	8. LIFT LOBBY	17. SUNBATHING TERRACE
3. LIFT LOBBY	9. RESTAURANT & BAR	18. 25 METRE INDOOR HEATED POOL
4. COFFEE SHOP	10. VOID TO FLOOR BELOW	19. SPA & PLUNGE POOL
5. RETAIL	11. MANAGEMENT OFFICE	20. SAUNA & STEAM ROOM
6. MANAGEMENT	12. BOARD ROOM	21. GYMNASIUM
	13. PRE-FUNCTION ROOM	22. CHANGE ROOMS & AMENITIES
	14. FUNCTION ROOMS	23. RESIDENTS & GUESTS' OUTDOOR RECREATION TERRACE
	15. TERRACE	24. BRIDGE TO RESIDENTS & GUESTS' POOL TERRACE
		25. ARBOUR WALK

PLEASE BE AWARE THAT THESE PLANS ARE SUBJECT TO CHANGE. IT MAY NOT INDICATE THE FINAL DESIGN, APPEARANCE, CONTENT, LAYOUT OR AS CONSTRUCTED FORMAT OF THESE LEVELS OR OTHER IMPROVEMENTS SHOWN. NO REPRESENTATION IS MADE OR WARRANTY GIVEN THAT ALL ITEMS OR DETAILS DEPICTED WILL BE PROVIDED AS PART OF THE DEVELOPMENT. DEVELOPMENT REQUIREMENTS AND/OR THE REQUIREMENTS OF THE LOCAL AUTHORITY MAY ALSO NECESSITATE CHANGES TO ANY OF THE INFORMATION ON THE PLAN. BUYERS ARE ADVISED TO REFER TO THE CONTRACT OF SALE AND DISCLOSURE DOCUMENTS FOR DETAILS OF THE DEVELOPMENT AND THE CHANGES THAT CAN BE MADE.

